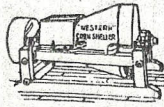


THE MILL FURNISHER

August 5, 1916

Number 55

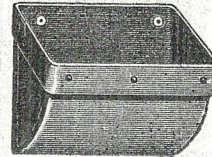
If It's ^{MADE} Western It's Quality



Western Shellers will handle more corn faster on less power and with less operating expense than any other sheller on the market, and will *not crack the corn.*

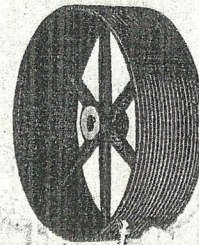
WESTERN BUCKETS

are made in the following types—Salem, Standard, Double Ends, Low Fronts, Malleable Braces, Reinforced Backs, and of Tin, Iron or Steel.



"WESTERN" PULLEYS

are made in Wood or Steel, Split and Cast Iron Types. Evenly balanced.



There is a "Western" Device for every Mill need. There is a time when every operator wants a **tried** and **true** help. To put your Mill on paying basis use the experience of veterans in the business. Get our catalog of everything from pit to cupola, it will help you to greater progress and more profit in handling your grain.

UNION IRON WORKS :: ^{LEV. 10} DENT'S CHL.

To Save—

The Basic and Fundamental Purpose of Union Special Bag Closing Machines

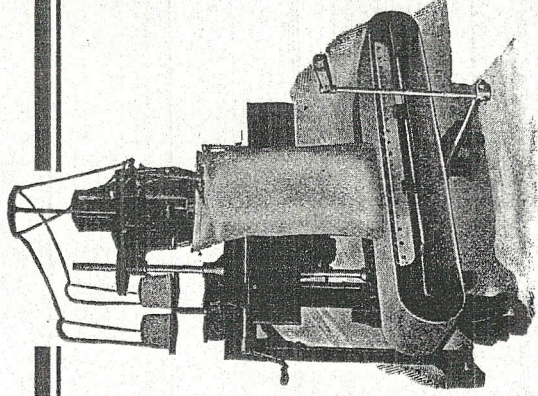
The "Union Special Way" replaces old, expensive and unsatisfactory hand methods. One man at the machine will do the work of four hand sewers and use only $\frac{1}{2}$ as much twine. (One plant, name on request, saved over \$1,100 in this item alone in one year.) In addition overweight, to counteract leakage, is eliminated, because waste, etc., is prevented by the tightness of the sacks (made possible by the double lock stitch) which remain so until again opened. You can handle all sizes and styles of bags.

**The saving in labor, twine, flour, etc., pays
for the machine in from six to twelve months**

The machine has been carefully designed and no expense is spared in the construction, especial consideration being given to the hand, continuous service met with in Flour Mills. As a result the Union Special Bag Closing Machine is so absolutely dependable and has been so universally indorsed by Flour Mills as the greatest cost reducer of the age.

Let us send a copy of interesting booklet entitled "Closing Filled Bags."
It contains specific information and numerous letters from satisfied users
of Union Machines. Write for your copy today.

UNION SPECIAL MACHINE COMPANY
CHICAGO & NEW YORK



THE DUNLOP MILLS

Richmond, Virginia, Mar. 30, 1912.
Union Special Machine Co., Chicago, Ill.
Gentlemen:—Your letter of the 26th received, and we beg to advise that we are sewing on the Union Special Machine sacks weighing six, ten, twelve, twenty-four, and forty-eight lbs. on flour, and 112 lbs. on corn to the bag at our elevator. The machine works very well on the above sizes.

The South American trade is calling for machine made sacks.

Yours very truly,

THE DUNLOP MILLS, Warner Moore & Co., Props.
V. A. Garvis.

SCIENTIFIC

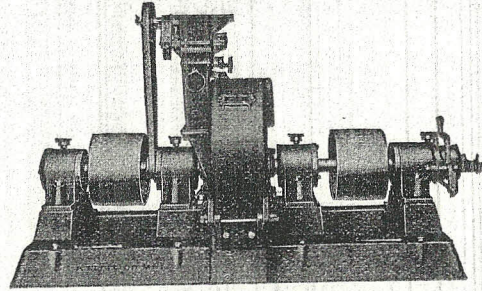
PROFITABLE GRINDING

MEANS ECONOMICAL, DEPEND-
ABLE MACHINERY ON THE JOB
EVERY DAY.

"Scientific" Ball Bearing Attrition Mills

(Users are fully protected by our warranty as to
efficiency, workmanship and patent litigation.)

fill the bill. These mills
have a reputation for
years of service, with low
operating cost and uni-
form product.



15 to 100 Horse Power.
Belt or motor driven.

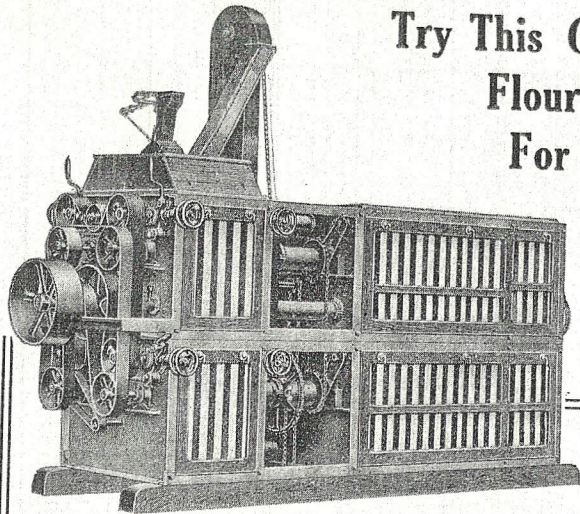
THE BAUER BROS. CO.

(Formerly The Foss Mfg. Co.)

512 Bauer Bldg.

Springfield, Ohio

SCIENTIFIC



Try This Guaranteed
Flour Mill
For 30 Days
At Our
Expense

7 BIG POINTS to Remember About the New XXth Century Flour Mill

1. Suction fan removes foreign matters.
2. Produces sweet, uniform grade of flour.
3. First Ball Bearing Self Contained Flour Mill.
4. Wheels can't clog.
5. Perfect feed on entire length of rolls.
6. No mechanical parts to wear out.
7. Requires small floor space.

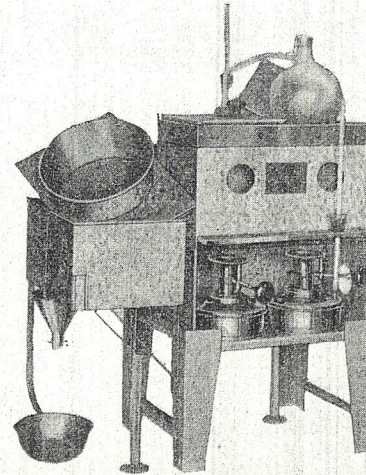
The centrifugal reels are entirely different from any other reel and are fully covered by a number of patents.

BEALL IMPROVEMENTS CO.
DECATUR, ILL.

Do You Know How Much Moisture Your Wheat Contains When It Hits the Rolls?

It should contain from 14½
to 15% in order to mill
properly and enable you
to get the most out of it

Here are Six Reasons Why You
Should Have a Moisture Tester:

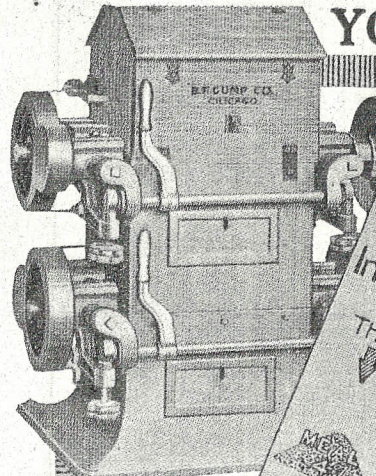


1. In buying to discriminate against too wet wheat and danger of decomposition.
2. To be able to separate wheat for storage according to moisture content.
3. In order to know how much moisture to add in tempering.
4. To test wheat just before hitting the rolls.
5. To determine whether or not your flour contains correct amount of moisture to insure good baking qualities for your particular trade.
6. To test flour and wheat in storage to determine amount of shrinkage.

The Official BROWN-DUVEL MOISTURE TESTER is the logical machine. With it you can accurately and rapidly test your wheat and flour.

Our new catalog is ready and will be mailed free on request. Now is the time to get ready for the new crop.

Seed Trade Reporting Bureau - - Chicago



YOU CAN MAKE

**POULTRY FOOD
AS GOOD AS
THE
BEST**

**THERE'S A
DIFFERENCE**
In making Cracked Corn
which do you get?
THIS on THIS



This 2-Pair high Roller Mill equipped with our "LE PAGE" Patent Cut will make cracked corn to sizes that will be fitted for chickens or

chicks, also other feed.

OUR "LE PAGE" Patent Cut cuts to a size, so that for general use a separator is not required.

WE FURNISH ALSO A THREE PAIR HIGH MILL EQUIPPED FOR ALL AROUND FEED GRINDING WRITE FOR OUR PROPOSITION TODAY

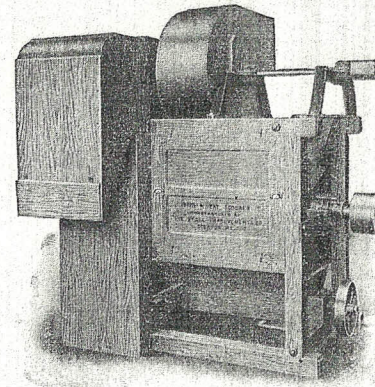
B. F. GUMP CO.

Established 1872 Incorporated 1901
Clinton St. - - CHICAGO, ILL.

Why not get this business that goes to the other fellow outside of your locality? It is yours for a small outlay of capital and space, in fact this outlay is so small that you will be surprised at the possibilities.

GET THIS
By using on your Rolls
THE *Le Page*
PAT. APP. FOR
PATENT CUT

FORGET FIRST COSTS!



LET THEIR COST BE WHAT IT MAY — it's the smallest cost in the long run when you consider the thousands of dollars it will turn out in its lifetime.

Unless you get the right results any machine is a failure and expensive at any price.

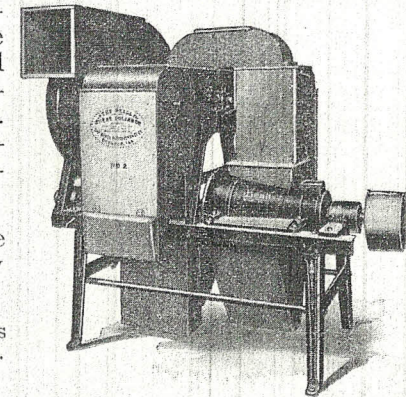
BEALL POLISHERS BEALL SCOURERS

give you the results—produce whiter flour and are designed to use as a second final polisher after polishing with other machines. Treats every grain separately, therefore cleans perfectly.

Made entirely of iron, these machines are practically indestructible.

You need both these machines if you want quality production.

Shall we send you the data?



BEALL IMPROVEMENTS CO.
DECATUR, ILLINOIS, U. S. A.

Register Your Name Now

Any one who has to do with the handling of grain in any shape or form, whether he be mill owner or head miller, the proprietor of an elevator or its superintendent, should see that he is provided with a copy of the new book which we are publishing. This book treats of every phase of the grain handling game. It tells you

how to get the best results, what to do and what not to do. This book entitled



Modern Grain Cleaning Machinery
NO. 76



will be mailed to you free and will be ready for distribution in about two weeks.

Send your name in now.

THE S.HOWES COMPANY
SILVER CREEK, N.Y.

REPRESENTATIVES:

F. E. Dorsey, 3850 Wabash Ave. Kansas City, Mo. W. M. Mentz Sinks Grove, W. Va.
E. A. Pynch, 311 3rd Ave., S. Minneapolis, Minn. Wm. Watson, 623 Western Union Bldg. Chicago
J. Q. Smythe, 3951 Broadway Indianapolis, Ind. Geo. S. Boss, Jefferson Hotel Toledo, Ohio

Paed Says:

"ENLIST NOW"

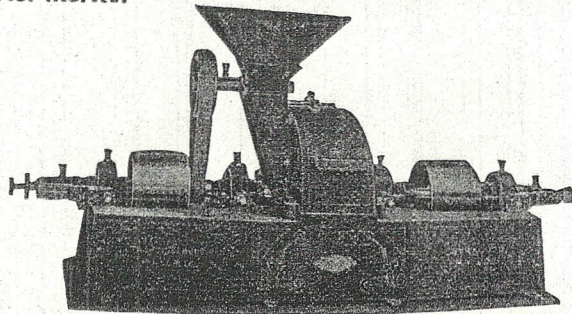
To you who have never tried "THE WILLIAMS WAY," send us a trial order and you will become a regular.

"If I had only known before," is a common remark made by those who for the first time try "THE WILLIAMS WAY," and so we say to you: "If you only knew what it means to receive the genuine 'WILLIAMS WAY' service offered our clients, you would lose no time enlisting."

Dufour Bolting Cloth, Hoyt Flintstone Leather Belting, Tyler Wire Cloth. Everything for the Mill or Elevator.

H. R. WILLIAMS MILL SUPPLY CO.
Room 105 Massachusetts Bldg., Kansas City, Mo.

As all manufacturers claim their Mills are the best, we cannot expect you to purchase our grinder *because we say it has no equal*, unless we are able to give satisfactory proof. Consequently, we ask permission to give you *honest facts*, also names and addresses of Millers *nearest you who are using our "Halstead" Attrition Mills*, which we consider is the best evidence of their *superior merits*.



THE ENGELBERG HULLER CO.
No. 831 W. Fayette St. SYRACUSE, N. Y.

8

WHAT WILL THIS DO IN SERVICE?

The McFeely Granulating Machines are guaranteed to pay 200% annually. These machines are not an experiment as there are hundreds of them in use where they have replaced rolls, scroll machines, missing links, disintegrators and other devices.

We have never had a failure where this machine was properly installed and operated per our instructions.

We have numerous testimonials similar to the following which bear out our claims that this mill delivers the goods.

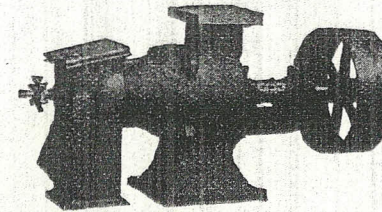
THE MILLTOWN MILLS
New Cumberland, Ohio

June 10, 1916.

THOS. McFEELY & CO.,
Philadelphia, Pa.
Gentlemen:—

We have been grinding for a week and the mill is doing fine. I think the Granulating Middlings Mills and the Granulating Bran and Middlings Finishers are the best machines I ever saw, and I have run several kinds. I am making the finest kind of flour and getting a good yield. Will send you samples soon. My capacity is more than double what it was before the Granulating Machines were installed. Mr. Pease, the millwright, certainly understands his business and I find everything that he said was true. If I ever put in any more machinery I want Mr. Pease to do the work.

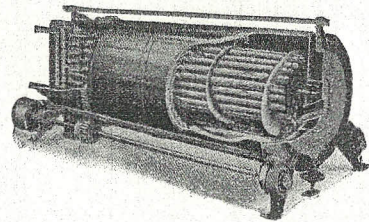
Yours truly,
R. S. MORSE.



More proof can be had upon request.

THOS. McFEELY CO.
510 BOURSE BLDG. PHILADELPHIA, PA.

9



**COSTS ONLY 1½c
PER 100 BUSHELS
TO HEAT WHEAT
PERFECTLY IN
ECONOMICAL H. & K. HEATERS**

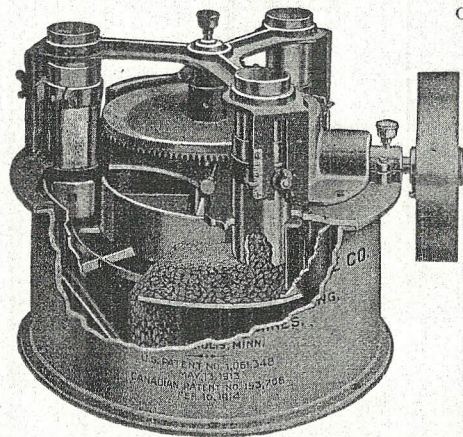
and if condensation is returned to boiler and only 4½c per 100 bushels if it is not returned, based on coal at \$4.00 per ton.

In addition it is the only heater which will never leak—treats each kernel separately, absolutely cannot clog, and requires no attention in case of sudden shut-down.

State the number of bushels you grind per hour and let us send you prices and particulars.

THE H. & K. WHEAT HEATER Flour Exchange
A. HUHN, President Minneapolis, Minn.
AUG. G. KUHN, Secretary

C O N V E N I E N C E



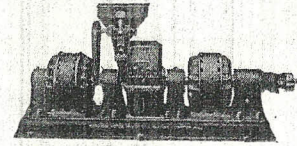
of adjustment and continuous feed and discharge, as well as ACCURACY, are important features of

**The
Automatic
Stroke
Measure
Machine**

when applied to the measuring of grain or any granular stock.

Jos. L. Willford "P. M. B." Machine Company
MINNEAPOLIS, MINN.

Indispensables



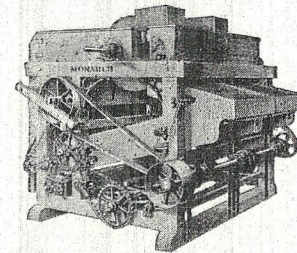
**The Monarch
Ball Bearing Attrition Mill**

Indispensable where consistently uniform and continuously economical grinding of feed is desired.

Every feature of this mill is original; patent protected and designed for the production of permanently satisfactory results.

A rigid guarantee, durability, convenience, accessibility, and low maintenance make it desirable.

Motor driven as shown or belt driven if preferred. Write for Catalog D No. 115



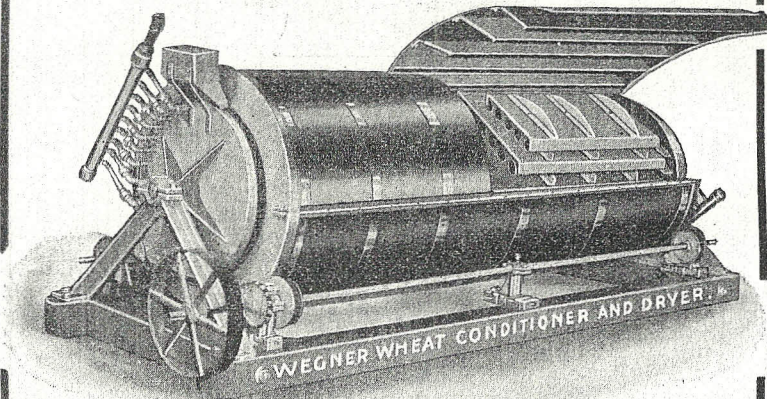
**The Monarch
Cracked Corn Separator**

Indispensable for the production of accurate results in grading cracked corn. An automatic, dustless, self-cleaning and economical machine, which grades cracked corn into three distinct sizes, scalps off waste materials and makes a tailing of bran and one of meal. Easy to set up and operate. Takes but little floor space. Write for Catalog C No. 115.

SPROUT, WALDRON & COMPANY
Mill Builders and Milling Engineers
Main Office and Works, P. O. Box 304 MUNCY, PA.

The New Wegner

Perfected by a man who has studied the art of wheat conditioning for the past ten years.



Wegner Heaters are known and used by all the principal mills on the continent.

The only heater that will run and heat wheat on condensed steam or hot water to any temperature that you desire.

This Heater has a positive feed. Under full control at all times; no stops necessary. The revolving conveyor drum can be opened in half, full length for inspection and cleaning when necessary.

This is the only Heater that heats without contact of the grain to the heated coils.

The grain flow can be increased or retarded while running by changing conveyor flights above coils. The drier can be used for curing grain for seed without injuring the germ.

F. A. WEGNER
SILVER CREEK, NEW YORK

THE MILL FURNISHER

A Reference Book
of MACHINERY,
APPLIANCES, SUP-
PLIES, ETC. - - -

For free circulation among
FLOUR, FEED AND
CEREAL MILLS, ETC.

Issued monthly by
MARKET PLACE PUB. CO.
Louis A. Koch, Mgr.

CHICAGO, ILL. AUGUST 5, 1916

CRACKED VS. CUT CORN

Arguments may arise as to the proper word to use—cracked or cut. According to Noah Webster's Dictionary, cracked means to break without entire separation of the parts. Cut means to separate the parts with a sharp instrument—to divide, to sever, to shape by cutting. So that the argument may be for or against.

In the manufacture of "Cracked" corn about the first means used was the old style Buhr Stone Mill. By this process the miller cracked the corn and received from 20 to 30 per cent of corn feed meal. When the roller mill became universal it was discovered that by putting on a coarse corrugation on a pair of rolls and running them at a differential, cracked corn could be produced with much less meal than by the old Buhr stone process, and even in this operation the corn was still cracked. By further experiment in this process the amount of meal was reduced to a minimum of 10 to 18 per cent, so that up to about two years ago the word "Cracked" was used when taken into consideration with corn for feeding purposes. About this time the B. F. Gump Co. brought out the LePage Patent Cut for making "Cut" corn, their idea being to cut instead of crack the corn with the result that the amount of corn feed meal made on this patent cut was reduced to 4 per cent or less, besides producing a clean cut, uniform product.

The LePage Patent Cut can be applied to all standard makes of roller

mills. The cut can be put on the rolls the same as ordinary corrugations and we advise all manufacturers of stock and chicken feeds to investigate this cut as it is not often in today's advanced milling that a distinctly new process is announced, but in this instance a noteworthy and commendable money-saving process warrants our endorsement.

The B. F. Gump Co. will cheerfully send samples of cut corn and wheat to any interested parties, together with prices and full information.

TRADE NOTES

Thos. McFeely Co., of Philadelphia, Pa., report the acceptance from the Arkadelphia Milling Co., Arkadelphia, Ark., who have one of the largest and finest mills in that state, of one No. 8 Granulating Bran Finisher, one No. 5 Middlings Finisher, three No. 4 Middlings Finishers and one No. 4 Special Middlings Mill. These people had tried out different makes of rubbing, crushing and pulverizing, conveyor and disc type machines, and reported at the St. Louis convention that the McFeely Granulating Machines and System was an entirely different proposition and produced over and over better results.

A Southern Missouri mill that put in one granulating machine 3 years ago and another 2 years ago just recently adopted the full granulating system and reported at the St. Louis convention that it was a most wonderful success.

The grain and milling trade will regret to hear of the death of Fred L. Cranson of Silver Creek, N. Y., a prominent man at most of the grain conventions a few years ago, who died Saturday, July 29. At the time of his death Mr. Cranson was secretary of the Huntley Mfg. Co. of Silver Creek. He was well and favorably known to the entire grain and milling trade of the country, having been actively identified for very many years with the manufacture and sale of cleaning machinery. His many friends in the trade will regret to learn of his passing away.

PURE PHOSPHATE

For Self-Rising and
White Biscuit Flour

Uniform Quality
Prompt Service
Correspondence Solicited

Provident Chemical Works

Main Office: ST. LOUIS, MO.
Branches: New York, Chicago,
San Francisco

EVIDENCE IN THE CASE

Times are changing. Old methods must go. What was hailed as a great invention 30 years ago must now give way to modern methods.

The "Midget" Marvel Mill sounds the knell of old-fashioned roller milling. Progressive millers are revolting against the dis-

advantage of the long system process, such as stair-climbing, choking spouts, shut-downs, superfluous grinding and bolting machinery, attrition flour, etc., to say nothing of the very narrow profits.

Over 700 men have freed themselves and now enjoy all year round incomes from their

MIDGET MARVEL SELF CONTAINED FLOUR MILL

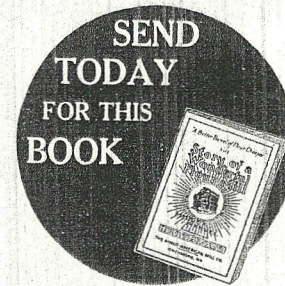
We have just published a book entitled "The Story of a Wonderful Flour Mill," which tells you all about this remarkable proposition. It explains just how the greater profits are to be obtained. It tells the personal experiences of owners of "Midget" Marvel Mills. It shows you that once the housewife tries the flour made by "Midget" Marvel Mills, she will have no other. It explains that this flour retains all the flavor and sweet aroma of the grain, because the volatile oils are not evaporated. This flour is sweeter and purer. It has more strength and it contains the natural, nutty flavor. This book of ours also tells you about our other new book, Confidential Selling Plans, and how we help our owners build up profitable businesses.

This is just what "Midget" Marvel ownership means to you. First, more money from a lesser investment. Then, easier sales and quicker returns. We maintain a service department which guides you daily in the operation of your mill. The yield and quality of flour must be up to

standard. Every "Midget" Marvel Mill is operated under the direction of our experts, through the Service Department. This Service Department also creates a national demand for "Midget" Marvel Flour and helps the owner to advertise and sell his flour, to buy wheat, to buy bags, and supplies. We know of no other concern in the world which offers the same service. It costs owners nothing.

* * * * *

You are really doing yourself an injustice if you do not have complete knowledge of what "Midget" Marvel Mills will do. You surely want to be in touch with the latest developments. Write today for our book entitled "The Story of a Wonderful Flour Mill." It is free. But don't delay.



High Praise Indeed

After running one of your 25-barrel "Midget" Mills for two years, we do not hesitate to say that it is the best mill for custom work that we know of. The flour gives our customers satisfaction and the run of the mill and the work and clean-up are all that could be expected of any mill.

SPORN & STAFFORD,
Hartshorn, N. C.

Glad to Recommend It

We are very glad to say that the "Midget" Marvel Mill is doing everything for us that you claimed it would do.

We believe we are making the best flour that is being made in this part of Virginia, and we know it is impossible for any mill to make better flour, regardless of the system used.

HART & IDE,
Vienna, Va.

Their Long System Flour Lacked Quality

So we installed a "Midget" Marvel Flour Mill, which introduced "quality" into our flour, and now the success of our selling power is only limited by the capacity of our mill, and our financial successes are sure, because we produce quality flour at the least possible cost per barrel. Hence our ability to meet any competition.

M. L. SNYDER & SONS,
Levels, W. Va.

7% of the Original Investment Earned in One Year

We are more than well pleased with this business and thank you for the interest you have taken in us.

We have made money with the "Midget" Marvel Mill, and can recommend this any time. By the time we will have been running twelve months we will have cleared \$2,500. So this is a good investment.

MC MURRAY & COPELAND,
Ellsworth, Kans.

Keeps Them Too Busy to Write

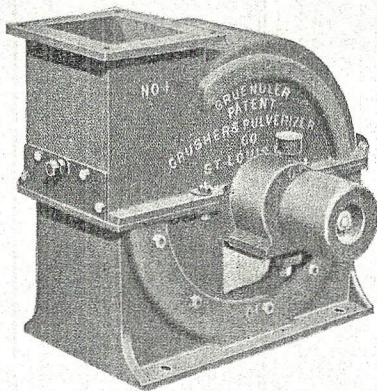
We are getting work from within two miles of mills situated nine miles away. We understand one nearby mill has closed down. Our mill is doing the business in this section. It makes "quality" flour and therefore friends.

FRANKFORT MILLING CO.,
Frankfort, W. Va.

ANGLO-AMERICAN MILL CO., Inc.

105 Trust Building - - - - - Owensboro Kentucky

IDEAL BALL BEARING PULVERIZER



THE Ideal Gruendler Ball-Bearing Pulverizer is very simple in construction—entirely of steel and iron—built very strong, to withstand the hardest service. The principal features of our type of mill are that they will save you 30 to 40 per cent in power, and 90 per cent in lubricants. All parts are quickly and easily accessible and adjustable.

A FEW OF THE MANY MATERIALS PULVERIZED BY GRUENDLER IDEAL BALL-BEARING PULVERIZERS:

- Screenings
Wheat
Wheat Bran
Wheat Knuckles
Sweepings, Etc.
Middlings
Bran
Corn Cobs
Corn Stalks

FOR FURTHER PARTICULARS WRITE

Gruendler Patent Crusher & Pulverizer Company

928 North First St., - - - St. Louis, Mo., U. S. A.

We have been grinding and corrugating rolls for 26 years

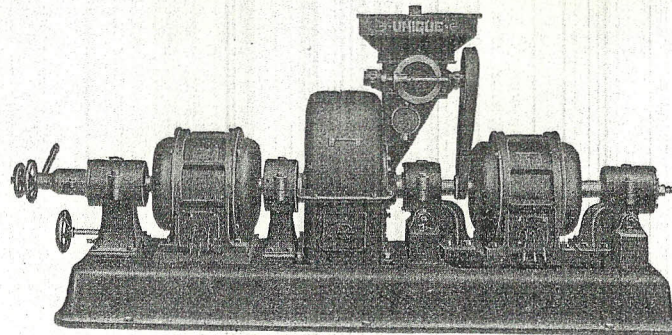


Mill Supplies
Du Four Bolting Cloth

BARRY-WEHMILLER MACH. CO.

St. Louis, Mo.

Ft. Worth, Tex.



GRIND your feed

Don't mash it and crush all the life out of it.
Customers don't care for such work.

THE UNIQUE BALL BEARING ATTRITION MILL

will grind your feed either fine or coarse, and will do it with a minimum amount of power and oil consumption. Customers will show their satisfaction by giving you more work, in fact, after you once grind their feed on a UNIQUE Mill, you will always grind it. Your closest competitor will be defeated when you install this machine—The King of Feed Grinders.

Give us a trial. We stand back of this machine and guarantee it in every respect.

Ask us to send you information about the Curved Arm Runner-head, Perfect Trammig Device and other improvements.

Our Feed Mill Catalogue No. 7 is FREE

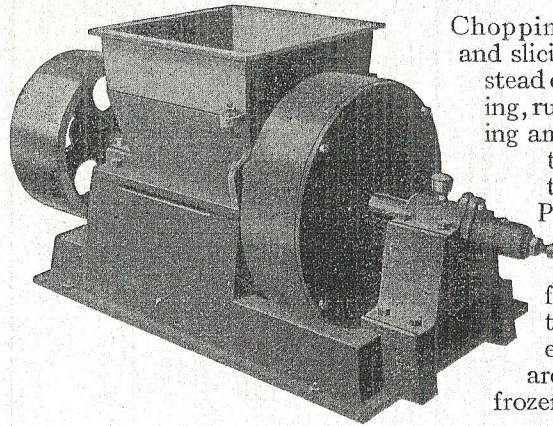
Robinson Mfg. Co. P. O. Box 410—Muncy, Pa.

The UNIQUE Mill Builders

Representatives at

- 623 Western Union Bldg., Chicago, Ill. East Akron, Ohio Louisville, Ky.
Salisbury, N. C. Baltimore, Md.
Minneapolis, Minn. Boston, Mass. Tulsa, Okla.

EAR CORN CHOPPER



Chopping, shearing and slicing action instead of the squeezing, rubbing, twisting and tearing action of other types.

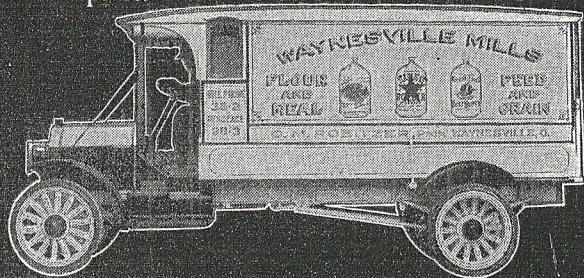
POWER[®] cut in half and a fine uniform reduction secured, even if cobs are wet, green, frozen or soggy.

Heavy — Solid — Rigid — Durable

THE NATIONAL COMPANY, PORT HURON MICH.

Armleder Motor Trucks

have the strength and durability necessary for long hauls over rough country roads. Will increase your business and reduce hauling expense.



Write us for details of our new sales plan that will save you a substantial sum on your Motor Truck purchases.

The O. Armleder Co.

12th, Plum and Charles Sts.

Cincinnati, Ohio

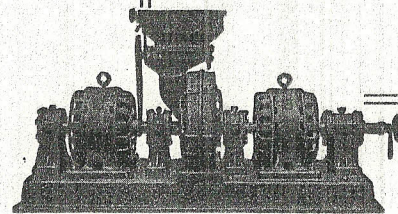
Small Expense

is the key-note of higher profits from your feed business. You can obtain this if you own the

Munson ^{Ball} _{Bearing} Mills

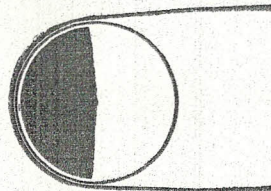
Write today for more information on these mills. Makers of complete equipment for Feed Milling Plants, Grain Elevators, Coal Elevators, etc.

We are successors to the long established mill and elevator machinery business of Munson Brothers Co.

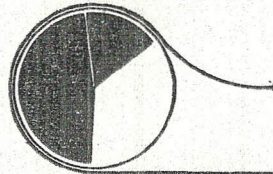


Munson Mill Machinery Co., Inc.

405 Broadway, UTICA, N. Y., U. S. A.



Without Cling-Surface



With Cling-Surface

32.3 Per Cent Increased Pulling Arc

THESE diagrams illustrate nicely how and why Cling-Surface stops slip. The belt runs slack without the necessity of tightening. Note the greatly increased arc of belt contact without Cling-Surface. The contact is 170°, with Cling-Surface it is increased 55° or 32.3 per cent.

Cling-Surface-treated belts be-

come impervious to moisture and steam and are not dried out by heat. They are excellent for mill service.

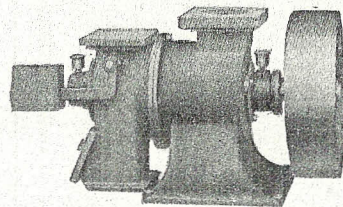
The application is very simple and the cost only a few cents per belt per year

Cling-Surface Company
1023 Niagara St., Buffalo, New York
New York Boston Chicago Atlanta
Denver Memphis etc.

Hughes Ball Bearing Middlings Mill

WE HAVE had our machines in operation many months comparing its work with some of the leaders, and today we feel very confident from the many complimentary letters we receive from the users of our new Ball Bearing Middlings Mill that we are here to STAY, and to increase the profits of the miller. If it does not do that, ship it back. "Hughes Pays the Freight."

Send your order today. Test it yourself along with ANY machine made. We



Hughes Ball Bearing Middlings Mill

have made the test and results have been unequalled. The work of middlings mills and the splendid results obtained by progressive millers through their use induced us to enter this field. The weak spots in others are simplified in the NEW perfection machine.

Thirty years milling and mill building enables us to help you to success in solving your mill problems. Write us your needs. We build mills complete, buy and sell mills, remodel and put mills on a paying basis. Our corps of efficient assistants will help you in any milling problem.

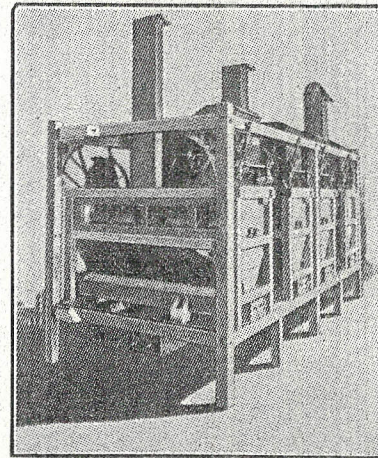
A. D. HUGHES CO.

ROCHESTER,

INDIANA

"NU-WAY"

OF LOWERING THE COST OF PRODUCING A BARREL OF FLOUR



Designed to modify the cost of a barrel of flour. The acme of construction and simplicity. Mechanically correct, strong and thoroughly practical, with no unnecessary parts. Represents the very latest in ideas, workmanship and material.

THE ONLY REAL ONE-MAN MILL ON THE MARKET

Man's supreme achievement in the manufacture of a flour mill. Guaranteed to produce results in quality and yield equal to any similar size mill. Built in three sizes—25, 50 and 75 bbl. capacity. The 25 bbl. mill contains 4 6x15 in. rolls and 4 pairs of 20 in. x 5 ft. inter-elevator reels, all enclosed in one frame, a self-contained flour mill. No other machinery is needed except a combined separator and scourer. The 50 and 75 bbl. mills contain 6 pairs of rolls and 6 reels each and a NU-WAY first break mill and granulator. Shook's "NU-WAY" Granulator increases bolting capacity fully 40 per cent.

Investigate the "NU-WAY" and start right. Full information on request.

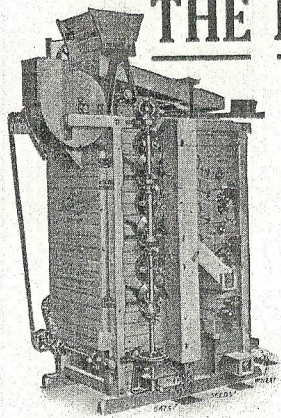
GENERAL MILL BUILDERS

CORN MILLS PULLEYS
FEED MILLS BELTING

CORN SHELLERS
OIL ENGINES
AND OTHER EQUIPMENT

SEND FOR OUR
CATALOG

THE CAPE MILL MFG. CO.
CAPE GIRARDEAU, : : MO.



THE RICHARDSON

An Unequaled
**OAT
SEPARATOR**
FOR THE
FLOUR MILL

SENT ON A
30 Days Free Trial

Richardson Grain Separator Co.
MINNEAPOLIS, MINN.

A GOOD WATER POWER

is useless to its owner until it is equipped with a water wheel. It must be harnessed in order to turn its energy to account, and it must be harnessed properly if it is to develop its real value.

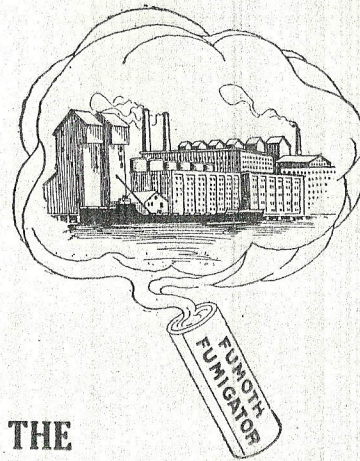
MOST WATER WHEELS WASTE

more than a third of the power they should develop. Frequently that wasted third represents big possibilities in the way of profits to the Miller.

OUR CATALOG TELLS HOW

and why you can increase your power one-third by the use of the I-X-L STEEL OVERSHOOT. You ought to know about the I-X-L whether you intend to make a change now or not. Send for our catalog today before you forget it.

FITZ WATER WHEEL COMPANY
HANOVER, PA.



THE F-U-M-O-T-H METHOD

KILLS FLOUR MOTHS

If you are bothered with flour moths we will guarantee to rid your mill of them, and further guarantee that this method will not injure either man or machinery — simple and easy to use. Accepted by Insurance Companies. Get our booklet — it tells you all about our system.

F. A. Thompson & Co.
530 Trombley Ave.
DETROIT - - MICH.

J. J. ROSS MILL FURNISHING COMPANY
Portland, Oregon, Western Agents

\$1000 A DAY CLEAR PROFIT
25 BAGS AN HOUR ON 15 H.P.

Others are doing this with our **DIAMOND FEED MILLS**—why not you? The **Diamond** is shipped on 30 Days Free Trial, you to be the judge.

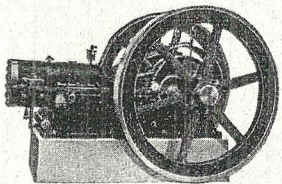
Get Our Liberal Proposition

DIAMOND HULLER CO.
BOX 95 WINONA MINNESOTA.

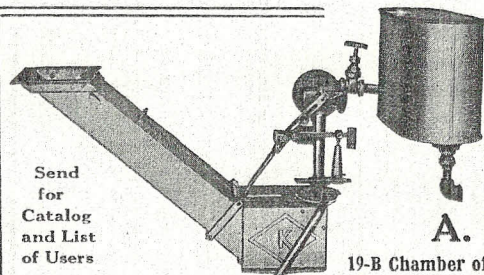
FOOS

Kerosene 3 to 90 H. P.
Prod. Gas 50 to 265 H. P.
Natural Gas 65 to 325 H. P.

Service Records on these engines over 25 years old. Reliability proven by 16 weeks continuous, non-stop operation, full load. Compare its clean cut, efficient, scientific design



THE FOOS GAS ENGINE CO. SPRINGFIELD, OHIO



Send for Catalog and List of Users

K-I-R-K
WHEAT
DAMPENERS

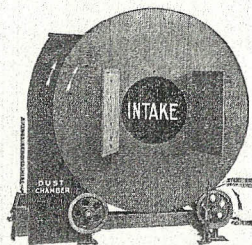
A. H. KIRK

19-B Chamber of Commerce MINNEAPOLIS

WHY USE DIRTY BAGS?

OUR Bag Cleaner cleans 300 to 600 bags per hour and saves and separates all material suitable for feed.

F. D. GAUNTT MFG. CO.



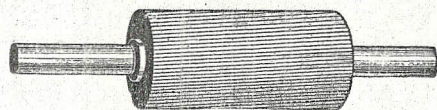
As good as the best. Better than the rest.

Get free circulars

FORT WAYNE INDIANA

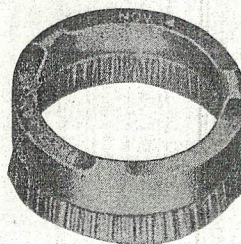
GOOD CORRUGATING —

When your wheat or corn rolls need redressing, our "Straub Special," "Scratch" or "Saw Tooth" corrugations are hard to beat. Our cuts are deep, unbroken and wear unusually long. Our prices are low considering the time we give to every roll. Send for our book of roll blanks now—it is free for the asking.



THE ORVILLE SIMPSON CO.

1224 Knowlton St., FLOUR MILL BUILDERS CINCINNATI, O.



The Lightest Cloth Cleaner On the Market

Making least wear on the sieve frame and on the brush itself—also cleaning RIGHT UP TO THE SIEVE EDGE.

PETERSON'S PATENT RING-BRUSH CLOTH CLEANER

Get one and try it. **SAMPLE FREE** if you mention this paper.

Cream City Can Wks. Milwaukee, Wis.

Established 1835



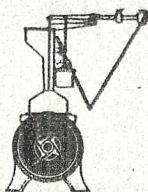
GENUINE OLD DUTCH ANCHOR BOLTING CLOTH AND GRIT GAUZE

The Strongest and Best Cloth Made CLOTHS MADE UP FOR EVERY KIND OF REEL AND SIFTER Mill Furnishings of Every Description WIRE CLOTH

R. L. LATIMER & CO.

24 N. FRONT STREET PHILADELPHIA, PA.

There is only one **FEED GOVERNOR**



The COLUMBIAN

THE

Common Sense Horizontal Wheat Steamer

IS A

PERFECT WHEAT CONDITIONER

Write for Booklet

COLUMBIAN FEED GOVERNOR CO.
104 No. 2nd St., Minneapolis, Minn.

Weevil, Worms, Mice, Rats, Etc.

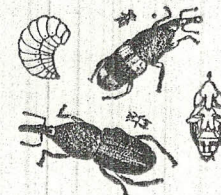
CLEANED OUT

from Mills and Elevators by use of

"FUMA"

Carbon Bisulphide

Never fails. Full instructions with every package.
THE NATIONAL COLOR AND CHEMICAL WORKS
59th and 11th Ave., New York Selling Agents



THE MILLERS' EXCHANGE

Positions Wanted—Help Wanted—Mills Wanted—Mills for Sale, Rent, or Exchange—Partners Wanted—Second-Hand Machinery for Sale or Wanted.—Etc.

Rate for advertising, 20 Cents a line per issue; no advertisement can be accepted for less than \$1.00 per issue. "Positions Wanted" 10 Cents a line; no advertisement under this head for less than 50 Cents.

For Machinery, Supplies, Tools, etc., not listed here nor advertised elsewhere in **The Mill Furnisher**, use the inquiry card which is enclosed with each copy of this book.

MILLS FOR SALE.

Good 35 bbl. Mill, Allis-Chalmers Machinery, all A1 condition, steam power, cheap fuel, track to mill. Write for full information to Edgar Thompson, Somerville, Ind.

For Sale—A North Dakota mill and elevator, an up-to-date plant. Write Box 397, Richardson, N. D.

For Sale—Splendid new mill, best looker, best equipped in S. D. One hundred barrel sifter system, in best wheat section. Will sell for less than cost to settle estate, or take partner miller with cash. Address Administrator, care Mill Furnisher, Postal Bldg., Chicago, Ill.

For Sale—50 bbl. mill located in a thriving South Dakota county seat. Town on two railroads. Draws custom trade for 25 miles. No mill nearer than 40 miles. Kerosene engine for power. Will sell for \$4,000, or trade for land. Address Owner, Lock Box 241, Washburn, N. D.

Fine water power for sale in North Carolina, including 75-barrel roller mill, corn mill and feed mill, in good grain country; everything necessary for an up-to-date mill. Located in a town of ten thousand inhabitants. Prices right and terms easy. Address L. Box 49, care of The Mill Furnisher, Postal Bldg., Chicago, Ill.

For Sale—A flour mill and elevator in northern Ohio. Has excellent flour and feed trade. Owner is administrator of estate. Will sell cheap for cash. A good proposition for practical miller and grain man. Investigation invited. Address Box 33, Weston, Ohio.

For Sale—50-barrel flour and feed mill, in Albany County, New York, 41 H. P. water wheel, Sprout, Waldron & Co. machinery throughout, all new in 1910. Doing a good business in a good farming and dairy section, no competition. Investigation invited. No postals answered. E. D. Lockwood, So. Waterloo, N. Y.

For Sale—Good natural waetr power feed and buckwheat mill, near creamery and depot. Western New York village. The chance of a lifetime. Must be seen to be appreciated. Also shafting, hangers and iron elevator boots for sale. Address, R 55, c/o Mill Furnisher, Postal Telegraph Bldg., Chicago, Ill.

MILLS FOR SALE

For Sale—Maryland village farm with Roller Grist Mill. Seven room dwelling, all necessary outbuildings. Fine grain section. Near large city. Address, M 55, care Mill Furnisher, Postal Telegraph Bldg., Chicago, Ill.

For Sale or Rent—An up-to-date mill at Breesport, N. Y., in the heart of a buckwheat and dairy country. Capacity 50 barrels wheat flour, 100 barrels buckwheat flour, eight to ten tons feed. Grain storage 8,000 bushels; feed storage four cars. Two acres of land; private railroad switch. Steam and gas engines, either one sufficient power to run mill alone. Good buckwheat flour trade in car lots established; large local feed trade. Chase, Hibbard Corporation, Elmhurst, N. Y.

For Sale—Owing to advanced age, I offer my 100-barrel water power flouring mill for sale. Splendid water power, large frame building, separate water wheels for mill and feed grinding. Seven double sets of rolls with plenty cleaning, purifying and bolting machinery. Two run stones and a Bowsher Feed Mill. A first class property for a man with capital to make money. Full description will be sent on request, but the property must be seen to be appreciated. Address, S 55, care Mill Furnisher, Chicago, Ill.

A 50-barrel steam mill for sale. Have contract with town to furnish power for electric lights which will keep up running expense of the mill. Not on the market after Oct. 1, 1916. L. C. Butler, Arion, Iowa.

MILLS WANTED

Wanted—Good going mill to furnish established trade of 150 to 300 bbls. per day; must be in good physical condition, well located to shipping and local grain supply; prefer New York state. Will rent, buy or take interest with management. Address X2, care Mill Furnisher, Postal Bldg., Chicago, Ill.

SECOND-HAND MACHINERY FOR SALE

For Sale—One second hand plain slide valve engine. Extra set of 2½ inch Judson governors. Price, \$100 for engine or \$110, including extra governors. F. O. B. Lewisville, Ohio. Address, E. P. Archer, Lewisville, Ohio.

THE MILLERS' EXCHANGE

SECOND HAND MACHINERY FOR SALE—Continued

For Sale—18 machines, mostly of Barnard & Leas make, including five rollers and plain sifter. Address John Lechner, Kekoskee, R. D., Mayville, Wis.

For Sale—A 12 Horse-power Red Line Steam Engine, in the best of condition; also boiler for same in good shape. Address J. C. Grout, Winchester, Ill.

For Sale—Four flour dressers, \$15 each; one purifier, \$20; one three-sieve scalper, \$15; two cyclone dust collectors, one wood split pulley 26x17. Isaac Bixler & Son, Homeworth, Ohio.

For Sale Cheap—50 H. P. Horizontal Tubular Boiler, 40 H. P. Slide Valve Engine. Both in good condition. Have been used about three years. Address, James C. Voelker, 36½ E. Gay St., Columbus, Ohio.

For Sale—Very cheap, one 22 H.P. Fairbanks-Morse engine in good shape. Am now using electricity for power and have no further use for it. Address C. B. Wright, Lisbon, N. Y.

Flour packer in good condition; drop gear with friction clutch attached, in good working order; driven on right side augers running with sun; any size tube. Price \$55; packed and delivered on cars. Address Packer, c/o Mill Furnisher, Postal Telegraph Bldg., Chicago, Ill.

For Sale—One 35-bbl. Barnard & Leas plain sifter mill and corn mill. Also 36-inch French Buhr water power mill and other machinery. Address L. L. Freeman, Reife, Mo.

For Sale—Hamilton Corliss 12x36, in good shape. Displaced by an oil engine, \$600.00. Loaded on cars here. Two Duplex Pumps, Worthington. One Stillwell & Bierce heater and lime extractor. Address, Springdale Milling Co., Springdale, Ark.

For Sale at a Sacrifice—To close out mill to make room for other purpose: Wolf Company gyratory separators; Roots Company vertical rotary pressure blowers; Wolf Company dust collector; Wolf Company Columbian corn and feed mill; Chase Foundry & Manufacturing Company 2 roll grinding mill; Wolf Company 4x3x30 roller mills; S. Howes Company Iron King Bran Packer; Wolf Company Imperial flour packer; S. Howes Company flour packer; S. Howes Company Eureka No. 1 Automatic Magnetic Separators; Wolf Company middlings purifier, size 3; Prinz & Rau dust collectors; Richmond Manufacturing Company No. 3 Niagara upright duster; Buffalo Forge Company No. 5 noiseless blower; Huntley Manufacturing Company separating machine; Wolf flour blending reels; American Machine Company ultimator sifting machine; Wolf Company centrifugal reels; spouts, bins, shafting, hangers, steel storage tank, 35x35 ft.; Norberg Corliss engine, etc. Address communications to A. Mendleson's Sons, Albany, N. Y.

SECOND HAND MACHINERY FOR SALE—Continued

For Sale Cheap—One 6x30 three high Noye Roller Mill, belt drive, both sides, new corrugated. F. D. Gauntt Mfg. Co., Fort Wayne, Indiana.

For Sale—3 Buckley mills mills \$35 each; one McFeeley No. 3, new, \$60; two No. 2 at \$30 each; ten Hughes ball-bearing, best made, at \$50, on trial; two snaps in a fine little mills, central Indiana, so very cheap. Get our price on anything for mill or elevator. We save YOU money, give YOU the best made. Sifters, 10, at \$50 up. Rochester, Ind. A. D. Hughes Co.

For Sale—One No. 4 "Monarch" Twin Shoe Receiving Separator used four seasons. One No. 8 "Monitor" Receiving Separator equipped with new sieve cleaning device. Address Separator, care Mill Furnisher, Postal Telegraph Bldg., Chicago, Ill.

For Sale—10x20 Noye automatic balanced valve engine. Generates about 75 H. P. at 100 lbs. boiler pressure and 220 R. P. M. Double leather endless belt, 14 in. x 49 ft. 4 in. This belt has not been used since being put in first class condition by manufacturers. The S. Alfred Seely Co., Spencer, N. Y.

Mill Machinery for Sale.
Rolls, 6x30, Nordyke & Marmon.
Purifiers, Nordyke & Marmon.
Sifters, Nordyke & Marmon square sifters.
Reels, Nordyke & Marmon centrifugal reels.
Bran Dusters, Nordyke & Marmon.
Transmission Machinery, such as shafting, boxes, hangers, pulleys, sheaves, etc.
Price list on application to Geo. F. Plant Milling Co., St. Louis, Missouri.

For Sale by National Company, Port Huron, Mich.
Attrition mills, all makes and sizes at scrap-iron prices.—Get our list.
Roller mills, for flour and feed purposes.
Complete flour-mill equipment, any capacity and in good condition.

For Sale—Bargains—One 20-in. and one 24-in. Monarch Attrition Mill, one No. 3 Bowsher, friction clutch pulleys, heavy iron pulleys; Allis heavy duty belt tighteners; two high rolls. The Brandt Bill Bearing Middlings Mill, Feed Governors, Feed Mill Feeders, Flour and Feed Feeders, etc. Middlings Mills of various makes and sizes. Our prices are right. A. G. Brandt Mfg. Co., Hagerstown, Ind.

For Sale—Two Ludlow Valve Co.'s gates with brass stems and brass face with 3-ft. circular opening. Also two Trump Mfg. Co.'s cast iron gates with 4-in. square opening, good working condition, could be used around water power to good advantage. Reasonable offer will buy them. Address Olean Mills, Olean, New York.

THE MILLERS' EXCHANGE

SECOND HAND MACHINERY FOR SALE—Continued

For Sale by
Sprout, Waldron & Co.
P. O. Box 304 Muncy, Pa.

We have a large number of second-hand rebuilt Attrition Mills, Sieve Bolters, Bran Dusters, Corn Shellers, Dust Collectors, Purifiers, Centrifugal and Round Reels, Double Roller Mills, Single Roller Mills, Three-high Roller Mills, Three-Pair-High Roller Mills, Separators of various sizes and styles, which have been rebuilt and in many cases made equal to new.

Our list is constantly changing, and if in the market for second-hand machines, write us, stating what you require and obtain our list before buying.

For Sale—Five two-section Barnard & Leas Plansifter Scapers, size 5. Two sections 8 feet long, 15 inches wide. Excellent second-hand condition, look like new.

One seven-section Barnard & Leas Plansifter Bolter. Four sections, 14 inches wide by 5 feet long. Three sections 18 3/4 inches wide by 5 feet long. Machine in two divisions and sieves in two parts. Good second-hand condition.

One six-section Barnard & Leas Plansifter Bolter. Six sections, 18 3/4 inches wide by 5 feet long. Machine in two divisions and sieves in two parts. Good second-hand condition.

Twenty-four Butler Round Reels, 8 feet long, 26 inches in diameter. Double conveyors, revolving brush. Excellent second-hand condition, look like new.

Eleven Double Stands 7 1/2 x 24 Butler Roller Mills, shaker feeds.

Two Double Stands 6 x 20 Noye Roller Mills, shaker feeds.

Very reasonable prices. Address S. W. Hershey, York, Pa.

For Sale—Having sold my mill property, but reserving the machinery, will offer same for sale after July 1st. Feed machinery consists of one 24-in. attrition cob crusher, sheller, meal sieve, 4 stands elevators. For buckwheat flour, one 36-in. stone. Cranson shucker, purifier, scourer, 2 stands elevators, one set floor scales, belting, shafting, pulleys; two Lefell water wheels. Everything nearly new and in good running order. For full particulars, address E. M. Putnam, Columbus, Pa.

REBUILT MACHINERY FOR SALE.

Single Head Attrition Mills:
1 18-in. Robinson, 2 18-in. American Specials.

Double Head Attrition Mills:
3 16-in. Monarch, 1 16-in. Unique, 2 18-in. Monarch.

2 20-in. Modern Special, 3 24-in. Monarch, heavy duty.

French Buhr Mills:
2 18-in. Nordyke & Marmon in wood frames.

2 24-in. Monarch Stands, with round hopper.

1 36-in. Munson Under Runner, in iron frame, with countershaft drive.

10 9x18 Double Style A Mills Mills.
Two pairs high Roller Mills:

1 9x18 Nordyke & Marmon, 1 9x30 case.
Three pairs High Roller Mills:

1 9x18 Case, 1 9x18 Noye, 1 6x20 Challenge, 1 9x24 Case.

Bar Corn Crushers:
1 No. 5 and 1 No. 3 Monarchs, 1 No. 15

Wolf Perfection, 1 Draver, 2 No. 16, 2 No. 17 and 1 No. 31 Eureka Tubular.

ENTERPRISE UTILITY MFG. CO.,
Western Union Bldg., Chicago, Illinois.

POSITIONS WANTED

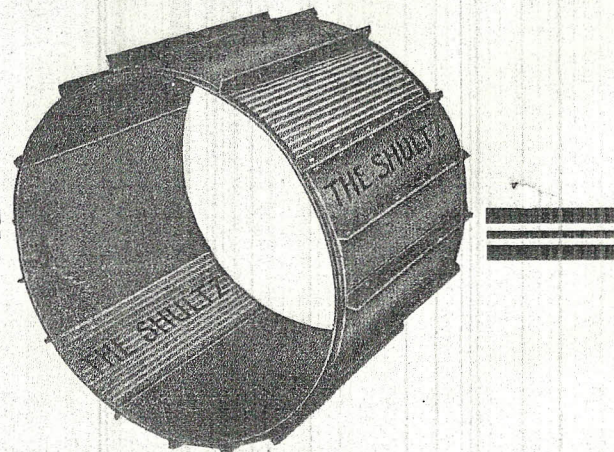
Change of location by engineer employed three years in present plant. Nine years experience; vise and own indicator tools and license. Desire medium size mill, but will take shift in large one; immediate or future engagement. Other information by mail. August Gathmann, Wessington Springs, S. Dak.

HELP WANTED

Wanted—Miller for a country mill, doing buckwheat and feed grinding mostly, rolls and burr, with attrition mill for feed. Steady work and permanent position. No "boozer" wanted. Eastern New York, D 2, c/o Mill Furnisher, Postal Telegraph Building, Chicago, Ill.

Wanted—Miller for 75 bbl. Water Power Custom and Merchant Mill. Steady work (no boozers). Address, H. S. Olmsted, Medina, N. Y.

Don't Sue Him; Show Him! Ten human collection letters for \$1. Reasonable, non-offending, effective. Send stamp for sample. William Cook 80-D Maiden Lane, New York.



WE MAKE "SHULTZ" CASES TO FIT ANY SCOURER

and we are so confident that it will improve conditions and give the most satisfactory results that we will let you have one on 30 days free trial wholly at our expense.

ORDER ONE NOW

Here are some interesting facts about a SHULTZ case. We will absolutely guarantee to more than double the efficiency of any scouring machine, not after it is worn out but when it's new.

The SHULTZ will clean the wheat just as effectively after eight years continuous running as it did when first installed.

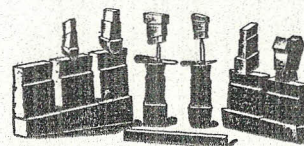
Clean wheat makes clear flour and the SHULTZ absolutely removes all impurities, therefore will improve the color of the flour, and also improve the general milling results.

Our catalog and testimonials on request.

C. A. SHULTZ MFG. CO.

MONTICELLO, IND.

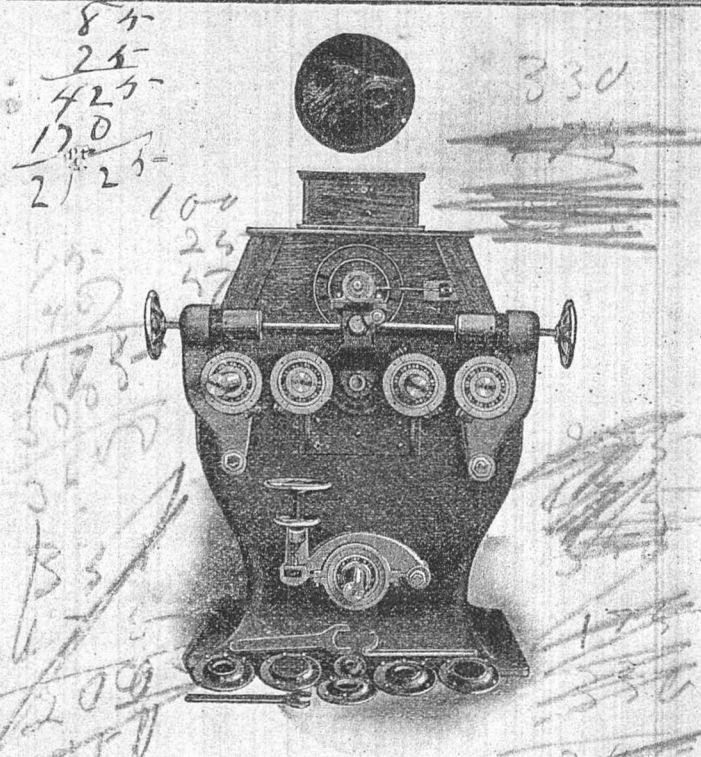
MILL COGS



On Shortest Possible Notice

We make Rock Maple Cogs with blank heads to be spaced and dressed after being driven. But we make a *Specialty of "Ready Dressed" cogs,* which are ready to run the moment driven and keyed. Send for circular "Z"

THE N. P. BOWSER CO., South Bend, Indiana



The Solution!

HERE—in the Wolf Ball Bearing Double Roller Mill—is the proven solution to exorbitant roller room power costs. Here is the mill that's a true friend to over-taxed power plants.

The Wolf Ball Bearing Double Roller Mill has established a record for economical operation that is not paralleled by any other make.

Would it not be a diplomatic move for you to equip your roller room with this unusual type of mill? Send for Bulletin 101.

THE WOLF COMPANY, Chambersburg, Pa.