

The



Muse

Amherst County Museum & Historical Society

staff@amherstcountymuseum.org

www.amherstcountymuseum.org

(434) 946-9068

Hours: Tuesday through Saturday, 10 a.m. to noon and 1 p.m. to 5 p.m.

VOLUME 38, NUMBER 4

August 2013

Viticulture in Central Virginia

A New Membership Year

Want to learn more about grape growing and wine making in Amherst County and Central Virginia?

Come to the Hamble Center at the Amherst County Museum on Sunday, September 15, 2013, at 2:00. Cliff Ambers, who owns Chateau Z Vineyard, will speak on this subject. As he says, "That will be a great forum to talk about the historic grapes of Central Virginia, my grape breeding, taste some grapes, and have everyone meet the "Amherst" grape, a self fertile wine grape I bred from a wild grape on top of High Peak." You may have seen Cliff at the Amherst Market on Thursday or read the article about him in the Lynchburg *News & Advance*. Come meet Cliff and listen to his story!



September is the beginning of our new membership year!

If you haven't yet received your membership renewal letter, you will shortly. Dues are \$15 a year for Seniors (55 +) and \$20 for a Senior Household; regular memberships are \$20 for an individual and \$25 for a family household. You can also read more about memberships on our website on the *Membership* tab.

Your renewal form also has a section for those who would like to make an additional contribution, and there is also a form on page 5 of this newsletter you can use for donations.

Do you know someone who might be interested in joining? Let us know and we'll be glad to send them an invitation—it's a great way to keep up with our activities!

Holiday Vacation & Museum Closings

The Museum will close on Saturday, August 31, for the Labor Day weekend.

The Museum can now accept
donations online

Just click on the *Donate* button on our homepage

www.amherstcountymuseum.org

Sunday, September 15, at 2 p.m. in the Hamble Center—Viticulture in Central Virginia

Friday, October 4, at 5 p.m.—Opening reception for Exhibit: Photographs of Frank Cash

Sunday, October 20, at 2 p.m. Clifford—Cemetery Tour

Saturday, November 9 at 5 p.m. in the Hamble Center—Our Annual GALA

Thank you!

Benefactor

*Kathryn Pixley, VA
Amherst Town Council*

Patrons

*Mrs. Charles Hamble, VA
Pamela Webber, VA*

Welcome to our New Members!

*Margaret Gilbert, MO
James & Susan Hahn, VA*

In Honor of Marianna Penn
Pamela Webber

Photographs of Frank Cash

On Friday, October 4, we will open a new exhibit of photographic prints from the Frank Cash collection. The guest curator, Professor Siobhan Burns of Lynchburg College, has been processing and digitizing the collection of glass plate negatives and the Amherst County Museum will be featuring more than twenty selections from the four hundred-plus collection of images. This particular exhibit will focus on pictures of people and places in the Monroe community.

The opening reception will be on Friday evening, **October 4, from 5 to 7 p.m.** The Museum's publication, *Miss Christine's Monroe*, is available from the gift shop and is a good way to brush up on your Monroe history for the exhibit.

Below, the lunch room at Monroe.



Cemetery Tour in Clifford

This year the Museum's Cemetery Tour will be in Clifford. Featured cemeteries will be St. Mark's Episcopal Church, St. Peter's Baptist Church and Winton. The tour is scheduled for Sunday, October 20 at 2 p.m. Last year's tour of the Amherst Cemetery and Christian Aid Cemetery was well received and we are looking forward to another fun afternoon of hearing the stories of those who have lived in Amherst County years ago. At right,



St. Mark's Episcopal Church; at left, St. Peter's Baptist Church

and at right, Winton, where Patrick's Henry's mother, Sarah Winston



Symes Henry, lived with her daughter and son-in-law, Samuel and Jane Meredith.

Miss Christine's Monroe is based on articles written and collected by Christine McIvor Smith, a teacher and principal of Monroe Elementary School for many years. Her sister, Mary McIvor Andrews, granted the Museum to reprint and publish her notebook of Monroe history and photographs. It is edited by Kathryn Spencer Pixley with technical editor Christopher Drumheller, Bring your copy to the opening reception for signing!

Summer Ice: Amherst County Cooled Down with Cool Drinks and Icy Desserts



Big Boy Pale Dry
Taylor Long Co., Charlotte, NC

Donated by Noah Whittaker in
1986

Arch. Taylor and Cordelia Taylor Long of Charlotte, NC, filed a patent for the bottle design in 1926, and the patent was granted in 1927

Lemon-Kola
6 ½ oz.

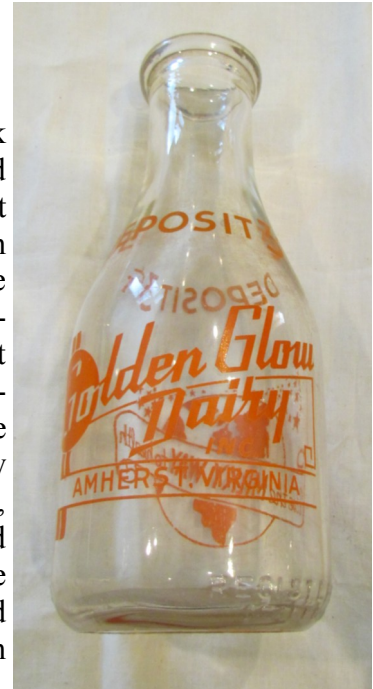
Bottled in Petersburg, VA

In 1916, the Lemon-Kola Bottling Works in Petersburg received a “Good” rating by inspector Breazeal for both inspections, as published in the 1916 report of the Virginia Department of Agriculture and Immigration, Dairy and Food Division. The Lemon-Kola Bottling Works was listed in LeRoy Hodges’ 1917 economic report to the Petersburg Chamber of Commerce.



“Use the Milky Way to Health”

This one quart milk jar was transferred to the Amherst County Museum in early 2013, by the Lynchburg Museum System. It was used to distribute milk from the Golden Glow Dairy, Amherst, Virginia, Inc., and is marked with the above slogan and indicated with “Deposit 3 cents”



Norman B. Patteson and W.M. Gannaway opened The Golden Glow Dairy in July, 1950. It operated a pasteurizing plant and dairy bar, and specialized in serving dairy products such as milkshakes, ice cream and frozen custard, as well as sandwiches.

Juice-O-Mat
by
Rival Mfg. Co.
of Kansas
City, MO

Donated by Mrs. Elvira Morse in 2002, this juicer is representative of those found in the everyday home in Amherst County in the 1940s and 1950s.



These ice tongs came to the Museum in 1996. It is double pronged with a wooden handle. The handle is marked: **Independent IGF**



Designed for home or small business use in lifting or moving small blocks of ice.

In 1989, Mary Boxley donated this ice shaver,
identified as a
Gilchrist No 78



Made of cast iron, it has a blade at the back of the bottom for shaving the ice; the top compartment gathers the ice shavings and has a lid to open up the compartment.

In 1994, Mr. and Mrs. T.S. Williams, Jr., donated Sarah Robertson's manuscript book of receipts (recipes). The book is dated 1926; the following recipe for Pineapple Sherbet is attributed to Miss Mary Warren:

1 qt. of water
1 ¼ lb of sugar
boiled hard for five (5) minutes
2 grated pine apples
2 Lemons (the juice of Lemons)

Mixe in after the syrup is cooled. This quantity makes 3 qt. of sherbet

2 Egg whites (stiffly beaten added when sherbet begins to freeze)

In the Museum's research library is a delightful pair of books about the Chaffin and Kent families. It is recollections of a childhood in Amherst county and contains summer pastimes for cooling off. In *That Our Heirs May Know* (volume 1), Lucille Chaffin Kent remarks on her childhood spent at Kentmoor (near Coolwell in Amherst County)

..Grandmother Country was making Kentmoor beautiful and making her famous caramel ice cream in a turn freezer with ice from the old ice house that had been filled the winter before. Her caramel cake and candy with black walnuts and raisins in it was much sought after—especially at Bethlehem Church and school functions.

Lucille Chaffin Kent described *Children's Day* at Bethlehem Church when she was about sixteen, in the early 1930s. After a program of hymns, recitations, solos, skits...

...we all marched out grinning like opossums with pride and joy. In no time flat the tables were full of REAL FOOD and right in the middle of the dessert table was Mable Kent's famous Caramel cake about four layers high, and large freezer of her equally famous caramel ice cream all frozen and marinated, right beside it...

from *That Our Heirs May Know*, volume 2,
page 47

About Lucille Chaffin Kent

June 12, 1997, *Amherst New Era-Progress*, Lucille Chaffin Kent of Lynchburg died Tuesday, June, 3, 1997, in Virginia Baptist Hospital.

She was a native of Campbell County, a former aviation instructor and a retired instructor from Liberty University where she taught music.

Local survivors include two sons, Peter A. Kent of Madison Heights and John A. Kent of Bedford, one sister, Evelyn Brown of Lynchburg; one brother, Claude Charrin of Bedford; and four grandchildren.

A funeral Service was held in Court Street United Methodist Church by Dr. Stanley C. Piqué.

Diuguid Rivermont Chapel is in charge of arrangements.

[Born April 28, 1908, according to Amherst County Museum cemetery surveys, and buried at Kentmoor Cemetery in Amherst County, not far from Coolwell]

Hamble Center Happenings!



Last summer the Museum's Hamble Center was a hub of activity, and this summer is no different! Some of Amherst County High's students, under the sponsorship of the art teacher, Maryellen Barron, have been busy



At top left, Cory Hott and Cheyenne Fulcher begin transferring the pattern to the mural's base. At lower left, Ryan Coates begins applying paint to a lamp post. Above, Stephanie Bartholomew and Megan Coates review the template. The mural is not intended to be a technically accurate scene, but focuses on having a fun time in downtown Amherst.



with a large mural to be placed on the side of the Travelers' building in downtown Amherst. Since the mural would be near the site of the old dance hall in the Wood building that burned in November of 1951, the students chose a 1920s night life and dance theme, complete with a vintage car and Victrola.

At right, an advertisement in the August 2, 1918, issue of the Amherst Progress features a Victrola and a stock of records at Blankenship Furniture in Lynchburg.



Now in the Museum's Gift Shop!

SUNDAY DRIVES

\$20 plus \$4 postage & handling (Va residents add \$1 tax)



The Mission of the Amherst County Museum & Historical Society is to discover, collect and preserve objects related to the history and genealogy of Amherst County. The Museum & Historical Society shall exhibit, interpret and offer those collections to provide educational experiences for people of all ages.

Memberships are annual from September to September; for details, see www.amherstcountymuseum.org/membership.html

Special Contributions

Friend	\$25 to \$49
Donor	\$50 to \$99
Patron	\$100 to \$499
Sponsor	\$500 to \$999
Benefactor	\$1000 and up

If you would like your donation to go to a certain purpose, please check one of the funds below.

Categories for Donations

Operating Fund _____
 Endowment Fund _____
 Building Fund _____

At the Hamble Center

One of our big goals for this year is PARKING! AS we have more events and more visitors for these events, we are cramping our parking lot and our neighbor, Bank of the James, has graciously given permission for the area next to the Hamble Center to be cleared, graded and graveled for additional parking. We now have a place, and initial clearing has been done, but have a much more to do. How can you help? We need donations to pay for this ambitious project. When we finish this, the Hamble Center will be better equipped for bigger events and that means MORE FUN!

And speaking of FUN, be sure to put this year's **GALA** on your calendar for **Saturday, November 9**. This annual fundraiser is definitely a lot of FUN and enables us to not only pay for our regular operating expenses, but also for our big goals—and this year parking is one of our big goals!

Thank you!

School Notes from the Past

The *Amherst New Era-Progress*, September 5, 1963, edition reported that the school openings went smoothly, except that the well for the Clifford school had gone dry.

The Virginia Senate confirmed O.G. Bailey as Superintendent of Public Schools for Amherst County. See *Richmond Daily Dispatch*, February 23, 1884.

July 1, 1966: Closing of Mt. Airy Elementary School, last of the small one, two and three room schools in Amherst County.

September 7, 1886: Mr. George McBain of Portsmouth leaves for Amherst Courthouse, where he engages as professor at Kenmore High School. He is an A.M. of the University of Virginia and a gentleman of rare culture. From the *Richmond Dispatch*, September 5, 1886.

November 5, 1965: Amherst County High School Lancers beat Nelson County 13-12 to win the district title in football. (*Amherst New Era-Progress*, November 11, 1965.)

Executive Board:
Bonnie Limbrick, President
Jose Davila, Vice President
Kathryn Pixley, Secretary
Tom Wallace, Treasurer
Bill Cash
Grady Davis
Judy Farris
Cynthia Hicks
Bill McClenny
Mary Frances Olinger
Leona Wilkins
Holly Hodges, Director

Address Service Requested

Amherst, VA 24521
PO Box 741
Society

Amherst County Museum & Historical

NON-PROFIT ORG.
BULK RATE
U.S. POSTAGE
PAID
AMHERST, VA
PERMIT NO. 24